



The Gemmological Association of Hong Kong Limited

香港寶石學協會有限公司

P.O. Box 97711, Tsim Sha Tsui, Kowloon, Hong Kong

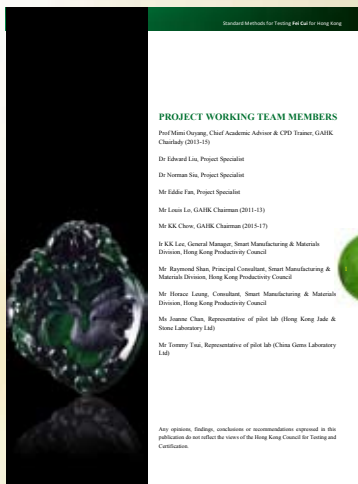
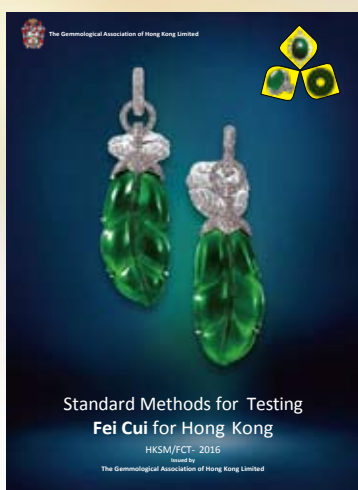
Web Site: www.gahk.org Email: info@gahk.org

Tel. No.: 2366-6006 Fax No: 2312 0669

香港寶石學協會研討會暨《香港翡翠標準測試方法》(HKSM/FCT-2016) 和採用“天然翡翠”為鑑定證書結論的新聞發佈會

GAHK Seminar & Press Conference of “Standard Methods for Testing Fei Cui for Hong Kong” (HKSM/FCT-2016) & Natural Fei Cui Certification

《香港翡翠標準測試方法》(HKSM/FCT-2016)



Date
日期

24 June 2017 (Saturday)
2017年6月24日 (星期六)

Time
時間

2:00pm – 2:20pm
下午2時至下午2時20分
(Guest Registration 登記 1:45pm – 2:00pm)

Venue

Meeting Room S224-S225, L2, Hong Kong Convention and Exhibition Centre

地點

香港會議展覽中心L2會議室S224-225

Languages
語言

Cantonese
廣東話

Organiser:
主辦機構



The Gemmological Association of Hong Kong Limited
香港寶石學協會有限公司

Co-organiser



UBM Asia Limited
亞洲博文



The Gemmological Association of Hong Kong Limited

香港寶石學協會有限公司

P.O. Box 97711, Tsim Sha Tsui, Kowloon, Hong Kong

Web Site: www.gahk.org Email: info@gahk.org

Tel. No.:2366-6006 Fax No: 2312 0669

GAHK Seminar 香港寶石學協會研討會

Speakers 演講嘉賓



The Importance of Master Colour Standard: Pigeon's Blood Ruby, Royal Blue and Cornflower Blue Sapphires

紅寶石、藍寶石的比色標準的重要性：鴿血紅紅寶石，
皇家藍和矢車菊藍藍寶石

Speaker講者: Dr Pornsawat Wathanakul, The Gem and Jewelry Institute of Thailand (GIT)

Description: The research on ruby & sapphire quality standards has been conducted in order to transform the subjective terms, i.e. Pigeon's Blood Red, Royal and Cornflower Blues, into science; the research results are the ruby and sapphire colour master sets that have been successfully used, and hence, helped eliminate the confusion among trade, lab and public.

Burmese Amber - A rare antique gem from Cretaceous (in Cantonese)

緬甸琥珀 - 一種來自白堊紀罕見的古董寶石 (廣東話)

Speaker講者: Dr Edward Liu, Secretary,
The Gemmological Association of Hong Kong (GAHK)



Description: Burmese amber becomes increasingly popular in the gem trade and market. Since its age has been reinvestigated and proved to late Cretaceous (around 100Ma), many new research and discoveries in paleontology on its inclusions were found and published in recent years. New colour varieties were found. Its origin and gemmological characteristic will be introduced. The value of this rare antique gem will be discussed.

| | |
|-----------------|--|
| Date 日期 | 24/6/2017 (Saturday) 2017年6月24日(星期六) |
| Time 時間 | 2:20pm – 4:00pm 下午2時20分至下午4時 |
| Venue 地點 | Meeting Room S224-S225, L2, Hong Kong Convention and Exhibition Centre 香港會議展覽中心L2會議室S224-225 |
| Languages 語言 | English & Cantonese 英語和廣東話 |



Organiser:
主辦機構



The Gemmological Association of Hong Kong Limited
香港寶石學協會有限公司

Co-organiser



UBM Asia Limited
亞洲博文

Supporting
Organisation



The Gem and Jewelry Institute of Thailand (Public Organization)



The Gemmological Association of Hong Kong Limited

香港寶石學協會有限公司

P.O. Box 97711, Tsim Sha Tsui, Kowloon, Hong Kong

Web Site: www.gahk.org Email: info@gahk.org

Tel. No.:2366-6006 Fax No: 2312 0669

GAHK Seminar 香港寶石學協會研討會

Ruby & Sapphire Treatments, and Update 紅藍寶石的處理及最新概況

Speaker 演講嘉賓

Dr Pornsawat Wathanakul

The Gem and Jewelry Institute of Thailand (Public Organisation)



The talk covers major ruby and sapphire treatments; irradiation, conventional heatings, heating with beryllium, fracture filling; their explanations and detections. Update on recent treatments like low temperature, heating with pressure and other possible new techniques will also be discussed.

講座內容涵蓋了主要的紅寶石和藍寶石處理,包括輻照,常規加熱,鈹處理加熱和裂隙充填等;解釋這些處理方法和檢測特徵。另外,一些近年的低溫處理,熱處理加壓及其他可能的新技術也將進行討論。

Biography

Pornsawat Wathanakul received her Dr. rer.nat. in Mineralogy and Geology of Mineral Deposits from Technical University of Aachen, Germany in 1989. She started working at the Department of Mineral Resources, Thailand, joined Department of Earth Sciences, Kasetsart University, Bangkok for 22 years, also served as a chair in Gem and Mineral Sciences there. She helped establish the Gem and Jewelry Institute of Thailand (GIT) in 1998, and was an academic adviser before appointed as the institute's director (May 2013-April 2017).

Pornsawat has constantly contributed her research on coloured stones in particular ruby and sapphire to international public. She has visited most of major gem fields. Besides a member of Coloured Stone Steering Committee, she is a Vice President of CIBJO's commissions (the Gemmological and the Coral).

- Date** : 24/6/2017 (Saturday)
日期 : 2017年6月24日(星期六)
- Time** : 19:00pm – 21:00pm
時間 : 晚上7時分至9時
- Venue** : The Hong Kong Institute of Gemmology
地點 : 4/F, Tung Hip Commercial Building, 248 Des Voeus Road Central, Hong Kong
香港珠寶學院
香港德輔道中248號東協商業大廈4樓
- Languages** : English
語言 : 英語
- Fee** : HK\$120 (member), HK\$200 (非會員)
費用 : 港幣 120元正(會員), 港幣 200元正(非會員)
- CPD-hour** : 2 CPD-hours counted
專業持續發展時數 : 2小時



Organiser:
主辦機構



The Gemmological Association of Hong Kong Limited
香港寶石學協會有限公司

Co-organiser



The Gem and Jewelry Institute of Thailand (Public Organization)